



WHITMORE ROAD Area Parking Review

LEGAL NOTIFICATION PARKING CONTROL SCHEME

IMPORTANT – THIS AFFECTS YOU – PLEASE READ

Whitmore Road Area Parking Review

What is this about?

A public consultation was undertaken in 2010 on proposals to introduce controlled parking (CPZ) in your area. There was a small majority of Whitmore Road residents in favour of a scheme however objections to the CPZ scheme resulted in the road being excluded from the final scheme introduced in 2012/13. Residents have subsequently sent us two petitions calling for a CPZ and there have other complaints about parking in the area.

Residents complain that Whitmore Road and un-restricted sections of Treve Avenue are being used by non-residents quite possibly rail commuters or people working in Harrow. The council's Traffic and Road Safety Advisory Panel in February 2015 agreed that there should be further CPZ proposals for Whitmore Road and the adjacent sections of Treve Avenue / Porlock Avenue.

A CPZ can be useful at addressing safety and access issues if the parking congestion is caused by non-residents. As you are aware the section of Whitmore Road east of its junction with Treve Avenue has residential property on the northern side and largely playing fields on the south side. The council wishes to deter long stay parking from those who have no connection with the immediate area but recognises some parking may be associated with the playing fields etc. As these roads are public highway there is need to provide for all road users which includes some parking associated with the playing fields.

We developed the proposals which we believe are the best compromise to help address the problems taking into account all the comments received in the past. The Council is now advertising the legal traffic order that will give effect to the proposed controls on your road. This statutory notification stage is the legal process that the council is required to undertake before any parking controls can be implemented. The proposed scheme is set out below and in the enclosed plans:

- A controlled parking zone, within the light blue dashed area, with operational times of Monday – Friday 10am to 1pm with permit parking bays and single yellow lines. This will to give a greater window of opportunity for enforcement to occur. The bays are located mainly on the south side of the eastern section of Whitmore Road to enable better visibility for vehicle coming from driveway. Permit cost £67.50p for 1st permit per household. £101, £135 and £169 for 2nd, 3rd and 4th permits respectively. Visitor permits cost £16.90 per book of 10 with a 50% discount for senior citizens.
- Pay and display parking operating Monday – Friday 8am - 6.30pm to allow some opportunity for parking associated with the playing fields and Whitmore High School. Cost: 10p per 20 minutes maximum stay 4 hours
- Single yellow line waiting restriction operating Monday – Friday 8am-6.30pm on the north side of Whitmore Road (eastern arm) to encourage the parking to occur just on the south side. The section between the junctions with Treve Avenue and Drury Road is in response to difficulties that buses experience when parking occurs on both sides.

What happens next?

The council is required by law to advertise these proposals this allows anyone to comment or raise objections. The leaflet gives you the background and detail of the proposed scheme.

We will advertise the Traffic Management Order by placing notices on-street and in local papers on or about 17th September 2015. If you wish to respond or make a formal objection then you need to do so in writing by the deadline of 7th October 2015.

If you are in agreement with the scheme then there is no need to respond. However, if you feel that you are materially affected by the proposals then you should set out your concerns in writing before the deadline. You must provide reasons to substantiate your reasons for objecting so this can be considered.

What happens with any objections or comments?

Any representations, objections or comments received will be discussed with the local ward councillors before being presented to the PH for approval to proceed to implementation. If there are any formal objections then the PH will determine what action needs to be taken. At this stage it will not be possible to add to or increase the extent of the scheme as advertised. However, changes that reduce the scale of the proposals can be made to address any objections where they do not impact on road safety. Alternatively any aspect of the proposals could be abandoned.

If it is agreed to proceed with the scheme then the residents will be informed of the outcome. Arrangements will subsequently be made with the Council's contractors to implement the scheme and confirmation of the operational date and any other relevant information will be sent to residents and businesses in the affected area.

If you want to make a comment or objection

If you are going to make comments or objections these should state how you are materially affected by the parking scheme proposed. The response needs to be made in writing (email is acceptable) providing your name and address. Please include the word **objection** in the text (to distinguish it clearly from comments) and the reason for the objection. The council is legally required to consider all formal objections before a final decision is made.

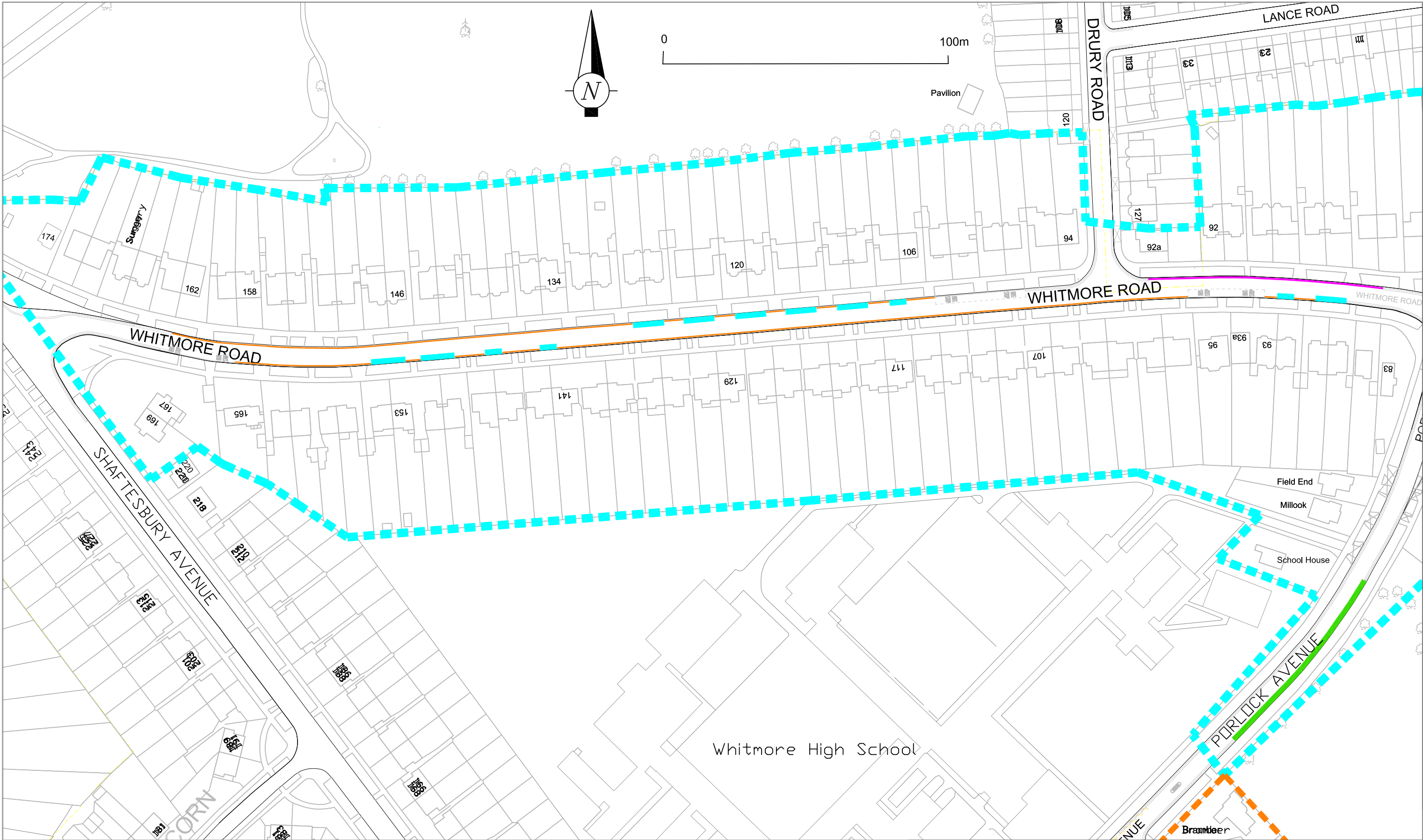
A copy of the traffic order and associated plans can be viewed at the councils 'One Stop Shop', and those that have internet access can view the notices on-line by visiting: www.harrow.gov.uk/trafficorders then click on the link to Whitmore Road area parking review. Please submit your objection via email to transportation@harrow.gov.uk

Or in writing sent to:

Service Manager - Traffic, Highways and Asset Management
Harrow Council, PO Box 39, Civic Centre, Harrow HA1 2XA

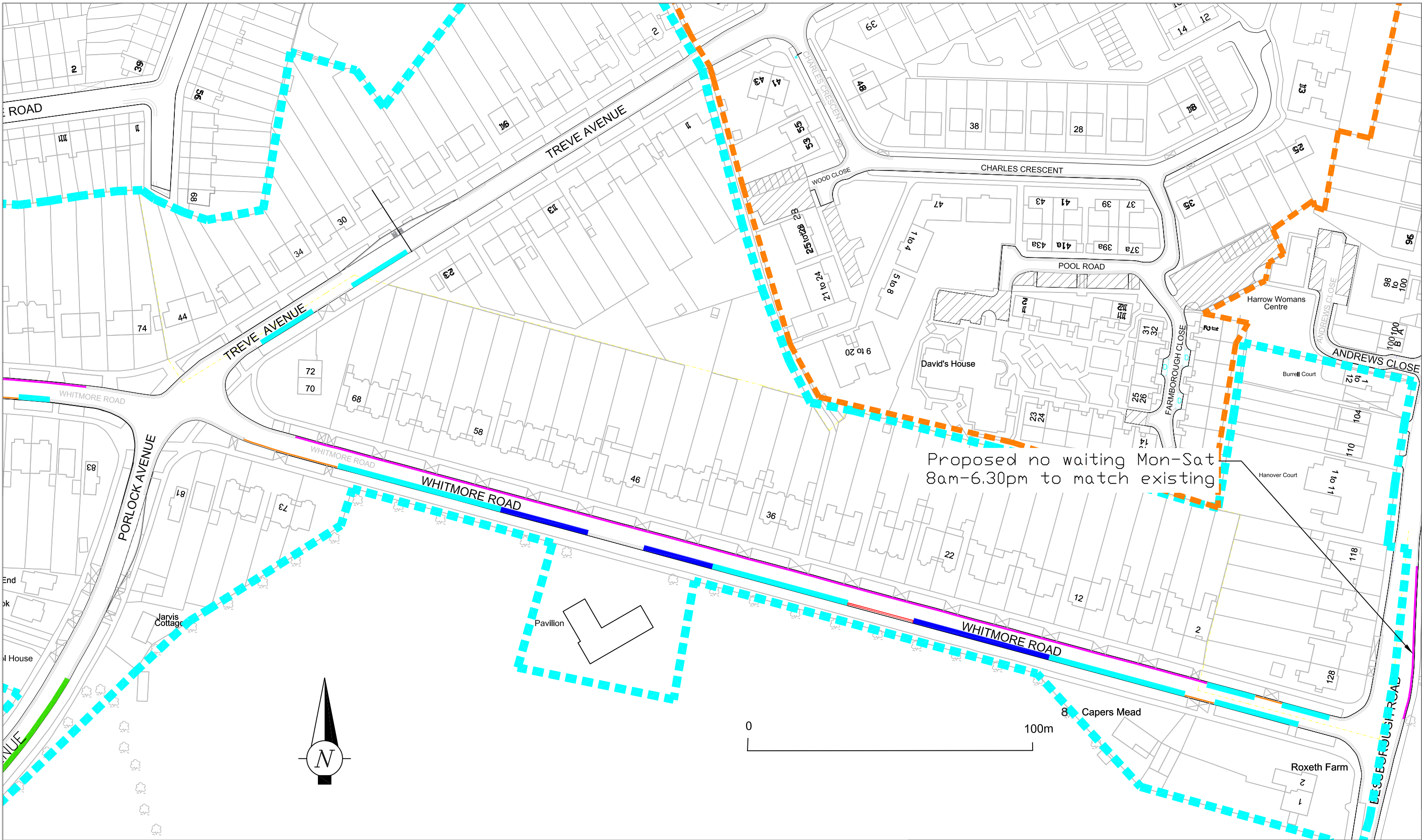
Please quote reference DP 2015-16.

Please return your comments by 7 October 2015.



KEY:	
	Proposed Double Yellow Lines
	Existing Waiting restriction
	Proposed no waiting Monday – Friday 8am – 6.30pm
	Proposed no waiting zone time – Monday – Friday 10am – 1pm
	Proposed permit parking bay Monday – Friday 10am – 1pm
	Proposed pay and display parking bay Monday – Friday 8am – 6.30pm
	Proposed new controlled parking zone (CPZ) area
	Existing adjacent CPZ area

A		Statutory consultation		SMF Aug 15	BP		
		REVISION TABLE		DRAWN BY AND DATE	DESIGNED BY AND DATE	CHECKED BY AND DATE	APPROVED BY AND DATE
CONSULTATION		SCALE (AT A3 SIZE) 1:1250					
		PROJECT Whitmore Road area parking review					
ENVIRONMENT & ENTERPRISE TRANSPORTATION		DRAWING TITLE Whitmore Road area Proposed bays and parking restrictions					
P.O. Box 39, Civic Centre, Harrow, Middlesex, HA1 2XA Tel: 020 8963 9811 Fax: 020 8420 9611		ISSUING OFFICE CIVIC CENTRE		DRAWING NUMBER		REVISION	
		TELEPHONE NUMBER 02084241437		T/DWG/000901/2		A	



KEY:

Proposed Double Yellow Lines

Proposed no waiting Monday – Friday 8am – 6.30pm (except as noted)

Proposed no waiting zone time – Monday – Friday 10am – 1pm

Proposed permit parking bay Monday – Friday 10am – 1pm

Proposed pay and display parking bay Monday – Friday 8am – 6.30pm

Proposed shared use – permits or pay and display parking bay Monday – Friday 8am – 6.30pm

Proposed new controlled parking zone (CPZ) area

Existing adjacent CPZ area

Existing Waiting restriction

A	Statutory consultation	SMF Aug 15		BP	
REVISION TABLE		DRAWN BY AND DATE	DESIGNED BY AND DATE	CHECKED BY AND DATE	APPROVED BY AND DATE
CONSULTATION	SCALE (AT A3 SIZE) 1:1250				
<div><div><div><div><div><div></div></div></div><div><div><div></div></div></div><div><div><div></div></div></div><div><div><div></div></div></div><div><div><div></div></div></div><div><div><div></div></div></div><div><div><div></div></div></div><div><div><div></div></div></div><div><div><div></div></div></div><div><div><div></div></div></div><div><div><div></div></div></div><div><div><div></div></div></div><div><div><div></div></div></div><div><div><div></div></div></div><div><div><div></div></div></div><div><div><div></div></div></div><div><div><div></div></div></div><div><div><div></div></div></div><div><div><div></div></div></div><div><div><div></div></div></div><div><div><div></div></div></div><div><div><div></div></div></div><div><div><div></div></div></div><div><div><div></div></div></div><div><div><div></div></div></div><div><div><div></div></div></div><div><div><div></div></div></div><div><div><div></div></div></div><div><div><div></div></div></div><div><div><div></div></div></div><div><div><div></div></div></div><div><div><div></div></div></div><div><div><div></div></div></div><div><div><div></div></div></div><div><div><div></div></div></div><div><div><div></div></div></div><div><div><div></div></div></div><div><div><div></div></div></div><div><div><div></div></div></div><div><div><div></div></div></div><div><div><div></div></div></div><div><div><div></div></div></div><div><div><div></div></div></div><div><div><div></div></div></div><div><div><div></div></div></div><div><div><div></div></div></div><div><div><div></div></div></div><div><div><div></div></div></div><div><div><div></div></div></div><div><div><div></div></div></div><div><div><div></div></div></div><div><div><div></div></div></div><div><div><div></div></div></div><div><div><div></div></div></div><div><div><div></div></div></div><div><div><div></div></div></div><div><div><div></div></div></div><div><div><div></div></div></div><div><div><div></div></div></div><div><div><div></div></div></div><div><div><div></div></div></div><div><div><div></div></div></div><div><div><div></div></div></div><div><div><div></div></div></div><div><div><div></div></div></div><div><div><div></div></div></div><div><div><div></div></div></div><div><div><div></div></div></div><div><div><div></div></div></div><div><div><div></div></div></div><div><div><div></div></div></div><div><div><div></div></div></div><div><div><div></div></div></div><div><div><div></div></div></div><div><div><div></div></div></div><div><div><div></div></div></div><div><div><div></div></div></div><div><div><div></div></div></div><div><div><div></div></div></div><div><div><div></div></div></div><div><div><div></div></div></div><div><div><div></div></div></div><div><div><div></div></div></div><div><div><div></div></div></div><div><div><div></div></div></div><div><div><div></div></div></div><div><div><div></div></div></div><div><div><div></div></div></div><div><div><div></div></div></div><div><div><div></div></div></div><div><div><div></div></div></div><div><div><div></div></div></div><div><div><div></div></div></div><div><div><div></div></div></div><div><div><div></div></div></div><div><div><div></div></div></div><div><div><div></div></div></div><div><div><div></div></div></div><div><div><div></div></div></div><div><div><div></div></div></div><div><div><div></div></div></div><div><div><div></div></div></div><div><div><div></div></div></div><div><div><div></div></div></div><div><div><div></div></div></div><div><div><div></div></div></div><div><div><div></div></div></div><div><div><div></div></div></div><div><div><div></div></div></div><div><div><div></div></div></div><div><div><div></div></div></div><div><div><div></div></div></div><div><div><div></div></div></div><div><div><div></div></div></div><div><div><div></div></div></div><div><div><div></div></div></div><div><div><div></div></div></div><div><div><div></div></div></div><div><div><div></div></div></div><div><div><div></div></div></div><div><div><div></div></div></div><div><div><div></div></div></div><div><div><div></div></div></div><div><div><div></div></div></div><div><div><div></div></div></div><div><div><div></div></div></div><div><div><div></div></div></div><div><div><div></div></div></div><div><div><div></div></div></div><div><div><div></div></div></div><div><div><div></div></div></div><div><div><div></div></div></div><div><div><div></div></div></div><div><div><div></div></div></div><div><div><div></div></div></div><div><div><div></div></div></div><div><div><div></div></div></div><div><div><div></div></div></div><div><div><div></div></div></div><div><div><div></div></div></div><div><div><div></div></div></div><div><div><div></div></div></div><div><div><div></div></div></div><div><div><div></div></div></div><div><div><div></div></div></div><div><div><div></div></div></div><div><div><div></div></div></div><div><div><div></div></div></div><div><div><div></div></div></div><div><div><div></div></div></div><div><div><div></div></div></div><div><div><div></div></div></div><div><div><div></div></div></div><div><div><div></div></div></div><div><div><div></div></div></div><div><div><div></div></div></div><div><div><div></div></div></div><div><div><div></div></div></div><div><div><div></div></div></div><div><div><div></div></div></div><div><div><div></div></div></div><div><div><div></div></div></div><div><div><div></div></div></div><div><div><div></div></div></div><div><div><div></div></div></div><div><div><div></div></div></div><div><div><div></div></div></div><div><div><div></div></div></div><div><div><div></div></div></div><div><div><div></div></div></div><div><div><div></div></div></div><div><div><div></div></div></div><div><div><div></div></div></div><div><div><div></div></div></div><div><div><div></div></div></div><div><div><div></div></div></div><div><div><div></div></div></div><div><div><div></div></div></div><div><div><div></div></div></div><div><div><div></div></div></div><div><div><div></div></div></div><div><div><div></div></div></div><div><div><div></div></div></div><div><div><div></div></div></div><div><div><div></div></div></div><div><div><div></div></div></div><div><div><div></div></div></div><div><div><div></div></div></div><div><div><div></div></div></div><div><div><div></div></div></div><div><div><div></div></div></div><div><div><div></div></div></div><div><div><div></div></div></div><div><div><div></div></div></div><div><div><div></div></div></div><div><div><div></div></div></div><div><div><div></div></div></div><div><div><div></div></div></div><div><div><div></div></div></div><div><div><div></div></div></div><div><div><div></div></div></div><div><div><div></div></div></div><div><div><div></div></div></div><div><div><div></div></div></div><div><div><div></div></div></div><div><div><div></div></div></div><div><div><div></div></div></div><div><div><div></div></div></div><div><div><div></div></div></div><div><div><div></div></div></div><div><div><div></div></div></div><div><div><div></div></div></div><div><div><div></div></div></div><div><div><div></div></div></div><div><div><div></div></div></div><div><div><div></div></div></div><div><div><div></div></div></div><div><div><div></div></div></div><div><div><div></div></div></div><div><div><div></div></div></div><div><div><div></div></div></div><div><div><div></div></div></div><div><div><div></div></div></div><div><div><div></div></div></div><div><div><div></div></div></div><div><div><div></div></div></div><div><div><div></div></div></div><div><div><div></div></div></div><div><div><div></div></div></div><div><div><div></div></div></div><div><div><div></div></div></div><div><div><div></div></div></div><div><div><div></div></div></div><div><div><div></div></div></div><div><div><div></div></div></div><div><div><div></div></div></div><div><div><div></div></div></div><div><div><div></div></div></div><div><div><div></div></div></div><div><div><div></div></div></div><div><div><div></div></div></div><div><div><div></div></div></div><div><div><div></div></div></div><div><div><div></div></div></div><div><div><div></div></div></div><div><div><div></div></div></div><div><div><div></div></div></div><div><div><div></div></div></div><div><div><div></div></div></div><div><div><div></div></div></div><div><div><div></div></div></div><div><div><div></div></div></div><div><div><div></div></div></div><div><div><div></div></div></div><div><div><div></div></div></div><div><div><div></div></div></div><div><div><div></div></div></div><div><div><div></div></div></div><div><div><div></div></div></div><div><div><div></div></div></div><div><div><div></div></div></div><div><div><div></div></div></div><div><div><div></div></div></div><div><div><div></div></div></div><div><div><div></div></div></div><div><div><div></div></div></div><div><div><div></div></div></div><div><div><div></div></div></div><div><div><div></div></div></div><div><div><div></div></div></div><div><div><div></div></div></div><div><div><div></div></div></div><div><div><div></div></div></div><div><div><div></div></div></div><div><div><div></div></div></div><div><div><div></div></div></div><div><div><div></div></div></div><div><div><div></div></div></div><div><div><div></div></div></div><div><div><div></div></div></div><div><div><div></div></div></div><div><div><div></div></div></div><div><div><div></div></div></div><div><div><div></div></div></div><div><div><div></div></div></div><div><div><div></div></div></div><div><div><div></div></div></div><div><div><div></div></div></div><div><div><div></div></div></div><div><div><div></div></div></div><div><div><div></div></div></div><div><div><div></div></div></div><div><div><div></div></div></div><div><div><div></div></div></div><div><div><div></div></div></div><div><div><div></div></div></div><div><div><div></div></div></div><div><div><div></div></div></div><div><div><div></div></div></div><div><div><div></div></div></div><div><div><div></div></div></div><div><div><div></div></div></div><div><div><div></div></div></div><div><div><div></div></div></div><div><div><div></div></div></div><div><div><div></div></div></div><div><div><div></div></div></div><div><div><div></div></div></div><div><div><div></div></div></div><div><div><div></div></div></div><div><div><div></div></div></div><div><div><div></div></div></div><div><div><div></div></div></div><div><div><div></div></div></div><div><div><div></div></div></div><div><div><div></div></div></div><div><div><div></div></div></div><div><div><div></div></div></div><div><div><div></div></div></div><div><div><div></div></div></div><div><div><div></div></div></div><div><div><div></div></div></div><div><div><div></div></div></div><div><div><div></div></div></div><div><div><div></div></div></div><div><div><div></div></div></div><div><div><div></div></div></div><div><div><div></div></div></div><div><div><div></div></div></div><div><div><div></div></div></div><div><div><div></div></div></div><div><div><div></div></div></div><div><div><div></div></div></div><div><div><div></div></div></div><div><div><div></div></div></div><div><div><div></div></div></div><div><div><div></div></div></div><div><div><div></div></div></div><div><div><div></div></div></div><div><div><div></div></div></div><div><div><div></div></div></div><div><div><div></div></div></div><div><div><div></div></div></div><div><div><div></div></div></div><div><div><div></div></div></div><div><div><div></div></div></div><div><div><div></div></div></div><div><div><div></div></div></div><div><div><div></div></div></div><div><div><div></div></div></div><div><div><div></div></div></div><div><div><div></div></div></div><div><div><div></div></div></div><div><div><div></div></div></div><div><div><div></div></div></div><div><div><div></div></div></div><div><div><div></div></div></div><div><div><div></div></div></div><div><div><div></div></div></div><div><div><div></div></div></div><div><div><div></div></div></div><div><div><div></div></div></div><div><div><div></div></div></div><div><div><div></div></div></div><div><div><div></div></div></div><div><div><div></div></div></div><div><div><div></div></div></div><div><div><div></div></div></div><div><div><div></div></div></</div></div></div></div>					

Please call the number below for a large print version of this document, or a summary of this document in your language.

Albanian	Nëqoftëse gjuha Angleze nuk është gjuha juaj e parë, dhe keni nevojë për përkthimin e informatave të përmbajtura në këtë dokumentë, ju lutemi kontaktoni numërin dhënë.
Arabic	إذا كانت الانجليزية ليست لغتك الأولى وتحتاج لترجمة معلومات هذه الوثيقة، الرجاء الاتصال على رقم
Bengali	যদি ইংরেজি আপনার মাতৃভাষা না হয় এবং আপনি যদি এই প্রচারপত্রের তথ্যগুলোর অনুবাদ পেতে চান তাহলে যে টেলিফোন নম্বর দেওয়া আছে সেখানে দয়া করে যোগাযোগ করুন।
Chinese	如果你主要說用的語言不是英語而需要將這份文件的內容翻譯成中文，請打註明的電話號碼提出這個要求。
Farsi	اگر انگلیسی زبان اول شما نیست و شما نیاز به ترجمه اطلاعات موجود در این مدرک را دارید، لطفاً با شماره داده شده تماس بگیرید
Gujarati	જો ઈંગ્લિશ તમારી પ્રથમ ભાષા ન હોય અને આ દસ્તાવેજમાં રહેલ માહિતીનો તરજૂમો (ટ્રાન્સલેશન) તમને જોઈતો હોય તો કૃપા કરી જણાવેલ નંબર ઉપર ફોન કરો
Hindi	यदि आपको अंग्रेज़ी समझ नहीं आती और आपको इस दस्तावेज़ में दी गई जानकारी का अनुवाद हिन्दी में चाहिए तो कृपया दिए गए नंबर पर फोन करें।
Punjabi	ਜੇ ਤੁਹਾਨੂੰ ਅੰਗਰੇਜ਼ੀ ਸਮਝ ਨਹੀਂ ਆਉਂਦੀ ਤੇ ਤੁਹਾਨੂੰ ਇਸ ਦਸਤਾਵੇਜ਼ ਵਿਚ ਦਿੱਤੀ ਗਈ ਜਾਣਕਾਰੀ ਦਾ ਤਰਜਮਾ ਪੰਜਾਬੀ ਵਿਚ ਚਾਹੀਦਾ ਹੈ ਤਾਂ ਕਿਰਪਾ ਕਰਕੇ ਦਿੱਤੇ ਗਏ ਨੰਬਰ ਤੇ ਫੋਨ ਕਰੋ।
Somali	Haddii Ingiriisku uusan ahayn afkaaga koowaad aadna u baahan tahay turjumidda xog ku jirta dokumentigan fadlan la xiriir lambarka lagu siiyey.
Tamil	ஆங்கிலம் உங்கள் தாய்மொழியாக இல்லாதிருந்து இப்பத்திரத்திலிருக்கும் தகவலின் மொழிபெயர்ப்பு உங்களுக்கு தேவைப்பட்டால் தயவுசெய்து தரப்பட்ட தொலைபேசி எண்ணில் தொடர்பு கொள்ளவும்.
Urdu	اگر انگریزی آپ کی مادری زبان نہیں ہے اور آپ کو اس دستاویز میں دی گئی معلومات کا اردو ترجمہ درکار ہے، تو براہ کرم دیئے گئے نمبر پر رابطہ کریں۔

020 8424 1437